

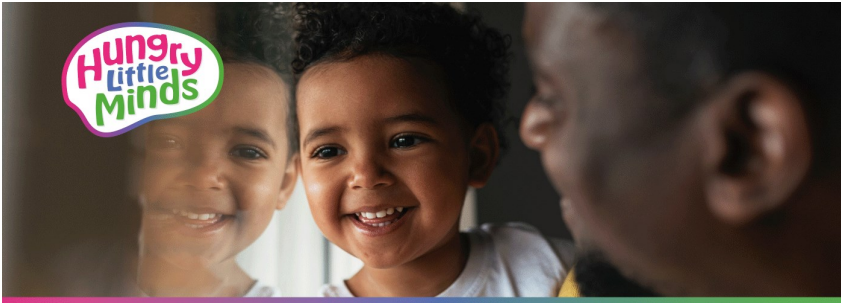
Lost Property

Please check and claim all lost property before the end of term, any items left will be recycled. The lost property basket is in the entrance hall next to the staff room door.

Hungry little Minds

Hungry Little Minds is a government initiative to support parents/carers to help their children learn at home and be ready for school. Visit the following website to find lots of activities and ideas.

<https://hungrylittleminds.campaign.gov.uk>



Do you need after school childcare?

Little Characters at Brimington are able to collect children from our school to provide after school childcare. For more information, including cost and availability, please phone Little Characters on 07845040533.

Swearing Outside School

We have had a few complaints about Parents / Carers swearing outside school. Please make sure you do not swear around the school, it is not good for children to hear.

Speedwell Infant School

12th July 2019

www.speedwellinfants.co.uk

Thank you

Thank you for all your support for school and with your child's learning this year. We are really proud of all the children's achievements.

Art Week

All the classes have taken part in art activities this week. Next week we will hold an art exhibition when parents / carers will be invited in to the hall to view all the work. Exhibition times will be on Monday 15th July, and Tuesday 16th July from 2.00pm. On both afternoons we will have cake, cold drinks and ice pops on sale. You can collect your child from class to show you round the exhibition and then you can take your child home after.

We would appreciate any donations of cakes on either day please. Please bring donations in to school on the morning.

Scooters and Bikes

Please make sure that you put your child's scooter/bikes in to the storage area, please do not leave them laid down outside the storage area. Bikes/scooters etc. must not be left inside the entrance to school as it is a fire exit and needs to be left clear at all times.

Please also ensure your child behaves responsibly on scooters and bikes coming into and leaving school. Stay on the path and go slowly so as not to knock anyone over.

Attendance and Holidays

Please ensure whenever possible that family holidays are taken in the school holidays. If you need to take a holiday in school time, please collect a form from the office to request time off. You must be able to provide an exceptional reason, with supporting documents for the request. Cost is not an exceptional reason. Holidays will only be authorised in exceptional circumstances and where children have good attendance.

Year 2 children are not allowed holidays in the month of May due to Key stage 1 assessment tests (SATs).

Term dates

We finish school on Friday July 19th at 3.20pm. We would like to wish you all a happy summer. We start back on Wednesday September 4th. Below are the term dates for the next school year.

Term Dates 2019 - 20

School Opens

Wednesday 4th September
Tuesday 5th November
Monday 6th January 2020
Monday 24th February
Monday 20th April
Monday 1st June

School Closes

Friday 25th October
Friday 20th December
Friday 14th February
Friday 3rd April
Friday 22nd May
Friday 17th July

School will also be closed on Friday 8th May 2020 (not Monday 4th May as in previous newsletter) for May Day and Friday 19th June for an INSET day.

Library - Summer Reading Challenge

The children have enjoyed our visits this year to Staveley Library. Caroline from Staveley library came in to school to talk to the children about the summer reading challenge at the library. The reading challenge runs from Saturday 13th July to 7th September. The challenge starts this Saturday 13th July with an activity day at Staveley library. This year's reading challenge is Space Chase, an out-of-this-world adventure! Children can collect stickers for books read, and a medal and certificate will be given to everyone who successfully completes their reading challenge.



Visit the following website for more details and games
<https://summerreadingchallenge.org.uk>

Playground Supervision

Just a reminder that the safety of your child is your responsibility until the school doors are open and your child is in school, as well as once collected from their classroom at home time. We would also like to remind you that equipment in both playgrounds should not be used before school starts and after school finishes. Please ensure your children are not using any equipment in the playground or outside play areas.